



Smart Line Integration (Pty) Ltd

Reg. No: 2005/015206/07

1ST Floor, Helvetia House
Greenvale Road
Wilbart
Germiston
1406
South Africa

PO Box 4337
Edenvale
1610
South Africa

Tel No: +27 11 450 1939
Fax No: +27 11 450 4895
E-Mail: info@sligroup.co.za
Web: www.sligroup.co.za

COMPANY PROFILE



- Integrated Solutions
- Access Control
- Third Party Applications
- Logical Access
- Smart Card Solutions
- Biometric Solutions
- Time & Attendance
- Customized Reports
- CCTV
- IP Video Solutions
- Intelligent Video
- Fire Detection
- Inert Gas Fire Suppression
- Audio & PA Systems
- Intercoms
- Licence Plate Recognition
- RFID



TABLE OF CONTENTS

1. Company Profile
2. Partner of Choice
3. Turnkey Solutions End to End
4. Partners
5. Sectors
6. Integrated Systems
7. Technology
8. SLI Clients
9. Company Details
10. Schedule of Services
11. Sample Drawing
12. Company Organogram
13. Company Map
14. Standard Terms and Conditions

- Integrated Solutions
- Access Control
- Third Party Applications
- Logical Access
- Smart Card Solutions
- Biometric Solutions
- Time & Attendance
- Customized Reports
- CCTV
- IP Video Solutions
- Intelligent Video
- Fire Detection
- Inert Gas Fire Suppression
- Audio & PA Systems
- Intercoms
- Licence Plate Recognition
- RFID

1. Company Profile

We would like to take this opportunity to introduce our company to you and trust the information provided will assist in your evaluation of our expertise and good standing.

Privately owned, Smart Line Integration (Pty) Ltd "SLI" was formed in 2005, the founders are M Arezina, G Deyzel, M Tamine and C Harris.

As a new generation company with modern ideas and a philosophy of being the best rather than the largest integrator in the security industry, creating new solutions based on innovative ideas while utilizing the finest that technology has to offer and thereby remaining the industry leaders in electronic security integration in Africa and Middle East.

Our commitment is the strategic design and seamless execution of innovative, state-of-the-art security systems delivered within budget and agreed timelines.

SLI provides world class and groundbreaking integrated solutions and has invested in its people and products to protect a variety of the clients and the client's assets. SLI have fully license d and qualified personnel providing solutions to over 100 facilities across South Africa, Africa and Middle East.

SLI are one of the market leaders in the installation of integrated fire and security systems and have successfully completed projects, the details of which are indicated on the attached list of contracts. Our expertise in system integration is extensive and we believe that excellent service is the key to establishing and maintaining happy and successful relationships between ourselves and our clients.

With all the experience in the industry obtained throughout the years, SLI have engineered specialized integrated electronic security systems for many large corporate businesses, including Reserve Banks and Oil Refineries requiring specialized integration between access control, payroll and human resources databases. Database interfaces designed by SLI ensure the smooth secure flow of data between the various sub and third party systems as well as CCTV and Fire Detection Systems.

In 2006 we were appointed by Lenel Systems International as one of their representative for Africa and Sub Sahara Africa. The Lenel suite of software and associated hardware is undoubtedly the most advanced integrated security products available worldwide and has been selected by major international corporations as their security product of choice.

We have successfully completed major projects for some of the largest corporate companies utilizing this equipment and because of the expertise developed over the years, we have now evolved to the point where our company has been transformed from a contracting operation into an IT solutions provider and system integrator

A close working relationship with suppliers ensures that new hardware and software on the market is continually assessed and tested prior to being released into the industry and more importantly, recommended to our clients.

SLI designs are created on the latest AutoCAD packages, many of which are also produced in Autodesk Inventor Package (3D Modeling) not only guaranteeing accurate system design but also ensuring the client's comprehensive understanding of the system design and implementation. A design philosophy of 80% design and 20% installation ensures that projects are implemented efficiently and on time and with minimal disruption for the client during installation, thereby meeting the expectations of the client.

SLI believes that service excellence is the key to ensure a positive and strong business and consequently has built a solid client base wherein the relationship with our clients is both personal and professional.

We endeavor to remain the industries leaders in integrated electronic security solutions through technologically advanced products, superior design and engineering and innovative integration concepts for corporate business.

Utilization of extensive experience available to the company to ensure service excellence.

Investment in personal and professional client relationships promoting a comprehensive understanding of the system design and implementation thereby creating a positive and strong business growth.

Investment in personal and professional client relationships resulting in promoting a comprehensive understanding of the tailored system design and implementation, thus ensuring service excellence.

We invite you to join us and as our client experience a new generation at work.

2. PARTNER OF CHOICE

At SLI, we are driven by our commitment to our customers and a desire to become the best security solution provider in Africa and further. We are dedicated and we guarantee in delivering the best solutions by focusing on high standards of workmanship and cutting-edge technology from reputable manufacturers.

SLI security technology is supported by highly experienced specialists, design engineers, service and maintenance professionals. All SLI employees are core values, focusing on customer service and a dedication to excellence.

Key to the success of SLI is ongoing external and in house staff trainings.

3. TURNKEY SOLUTIONS END TO END

SLI provides a comprehensive range of turnkey solutions from basic to enterprise solutions through to integrated systems, access control, CCTV, intrusion, asset tracking and biometrics systems.

As a leader, SLI provides off the shelf or customized security solutions to meet the requirements and needs for any client/project.

We offer a complete turnkey solution from system design, engineering, project management, installation, commissioning, training and additional training through to maintenance.

4. PARTNERS

Lenel OnGuard is our brand of choice as a security integration platform and is available in a wide variety of languages. Lenel applications are relevant to every major industry, tools to any business application and provides extensive support to our clients.

The solution based on Lenel is a powerful advantage in complete solutions for any project from stand alone security system requirements through to enterprise multi-server solutions.

For new or existing buildings, we can develop a solution that will enable you to better manage your facility, provide a safe and secure environment. All SLI solutions are scalable with open platform which can expand with your business needs

5. SECTORS

From consulting, design, planning through to integration, installation, and ongoing service, SLI provides state-of-the-art systems/solutions to the following sectors:

- Retail Sector
- Mining Sector
- Oil Refineries
- Banking Sector
- Diamond Industry
- Auto Industry
- Government Sector
- Healthcare Facilities
- Education

6. INTEGRATED SYSTEMS

SLI adds value to new and or existing systems with integration to third party software or hardware which optimizes the security, management and ensures safety.

SLI integrated solutions assists all businesses in managing the number of devices and systems in an effective way. Our team works with the client to design and develop a system that will grow with the client future needs and requirements.

The planning phase is the key whether it is a new construction or an existing, with our comprehensive planning we can reduce the installation period and ensure a high performance of the system, saving time and money.

Maintenance and regular upgrades of the integrated system will ensure the longevity of investment and maximum operating performance.

SLI responsive team of service and maintenance professionals, averaging 10 years experience, will maintain and update both hardware and software as well as provide training to the client's staff.

7. TECHNOLOGY

SLI security solutions are built with a combination of SLI flavour and edge technology and products from internationally reputable manufacturers and tailored systems to meet the client needs and specifications ensuring that our clients are protected by state-of-the-art security solutions

8. SLI CLIENTS

Client	System Installed	Installation Address	Company Logo
Amazon	Access Control	Cape Town	
National Bank of Rwanda	Access Control and CCTV Systems	Rwanda	
Chevron	Access Control and CCTV Systems	Rosebank, Cape Town, Mauritius, Angola and Cabinda	
Central Bank of Lesotho	Access Control, Biometrics, CCTV, Metal Detectors and X-Ray Machines	Lesotho	
Eskom	Access Control, Intrusion and Fire Detection	Eric and Megawatt Park	
First National Bank	Access Control, CCTV, Intrusion, Fire Detection, Public Address and Intercom System	BankCity	
Hewlett Packard	Access Control and CCTV Systems	Senderwood and Cape Town	
Microsoft	Access Control and CCTV Systems	Johannesburg, Pretoria and Cape Town	
Safdico (DTP)	Access Control, Biometrics and CCTV Systems	Botswana	
Schlumberger	Access Control, Biometrics and CCTV Systems	Angola, Cabinda, Gabon, Ghana, Ivory Coast, Cameroon and Congo	
Sonangol	Access Control, CCTV, Fire Detection, Intrusion Systems	Angola	
Vale	Access Control and CCTV Systems	Johannesburg and Mozambique	
Nissan SA	Access Control and CCTV Systems	Pretoria	
Tanzania Pension Fund	Biometric System	Tanzania	
Gemological Institute of America	Access Control and CCTV Systems	Botswana	
DiamCad	Access Control and CCTV System	Botswana	

Formatted: Font: (Default) Arial, 8 pt

9. COMPANY DETAILS

Name: Smart Line Integration (Pty) Ltd

Registration No: 2005/015206/07

Vat No: 4470227671

Physical Address: 1st Floor
Helvetia House
Greenvale Road
Wilbart
Germiston
South Africa
1401

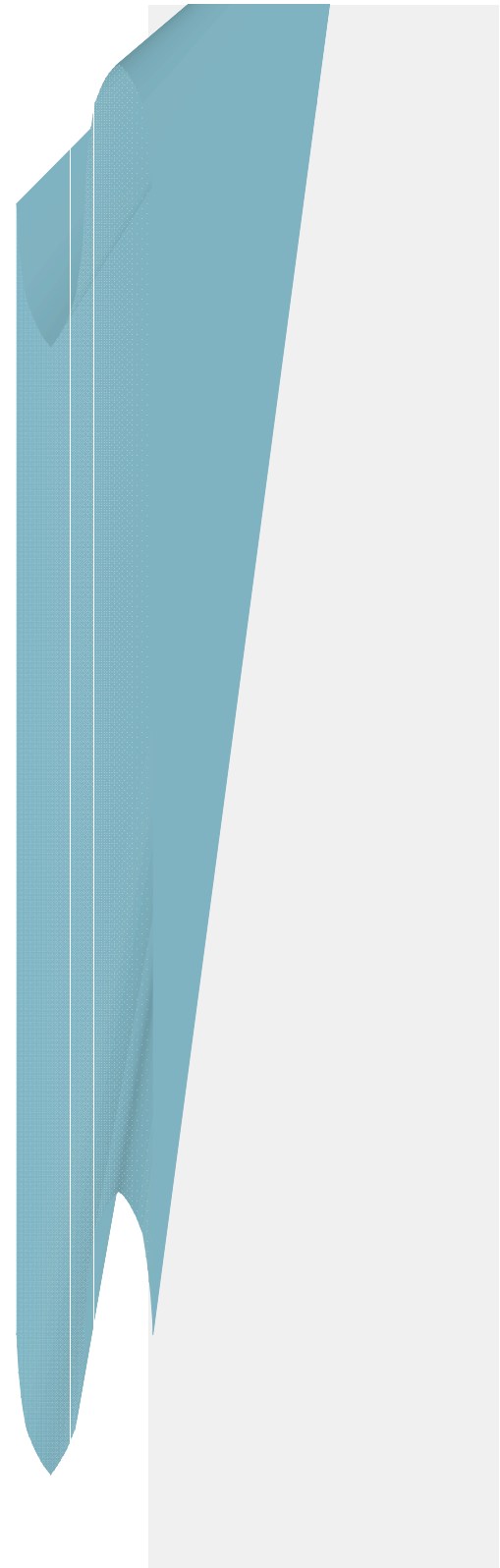
Postal Address: P O Box 4337
Edenvale
1610

Contact Number: +27 11 450 1939

Fax Number: +27 11 450 4895

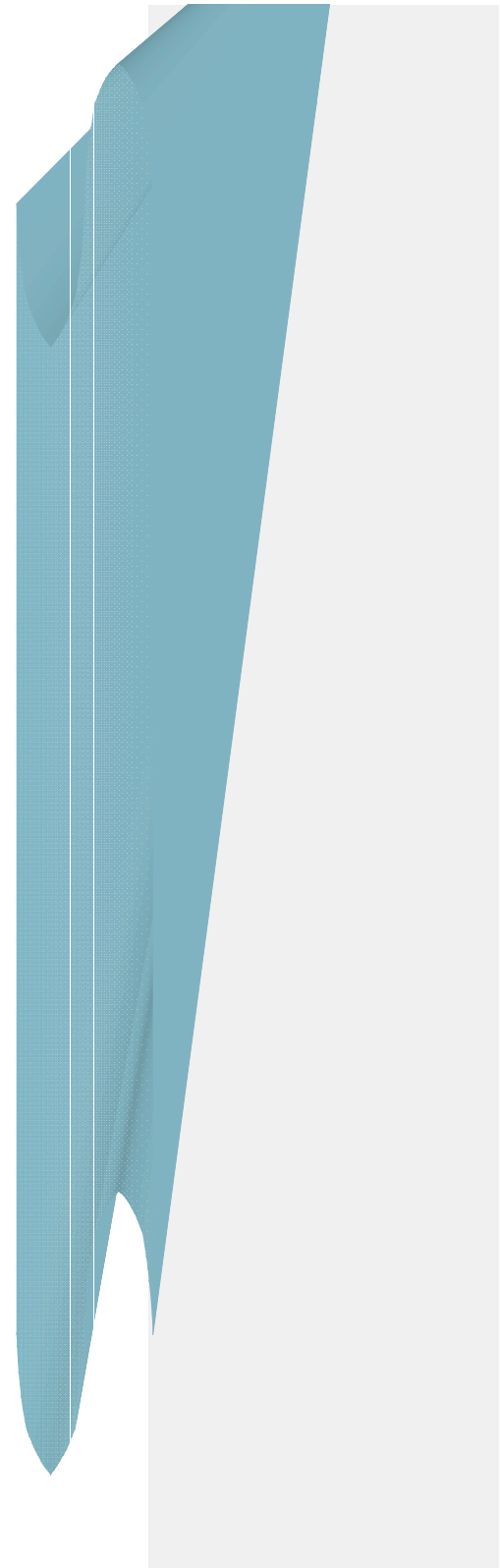
Bankers: Standard Bank
Branch: Germiston
Branch Code: 011642
Account No: 020338988

E-Mail: info.sligroup.co.za
Web: www.sligroup.co.za

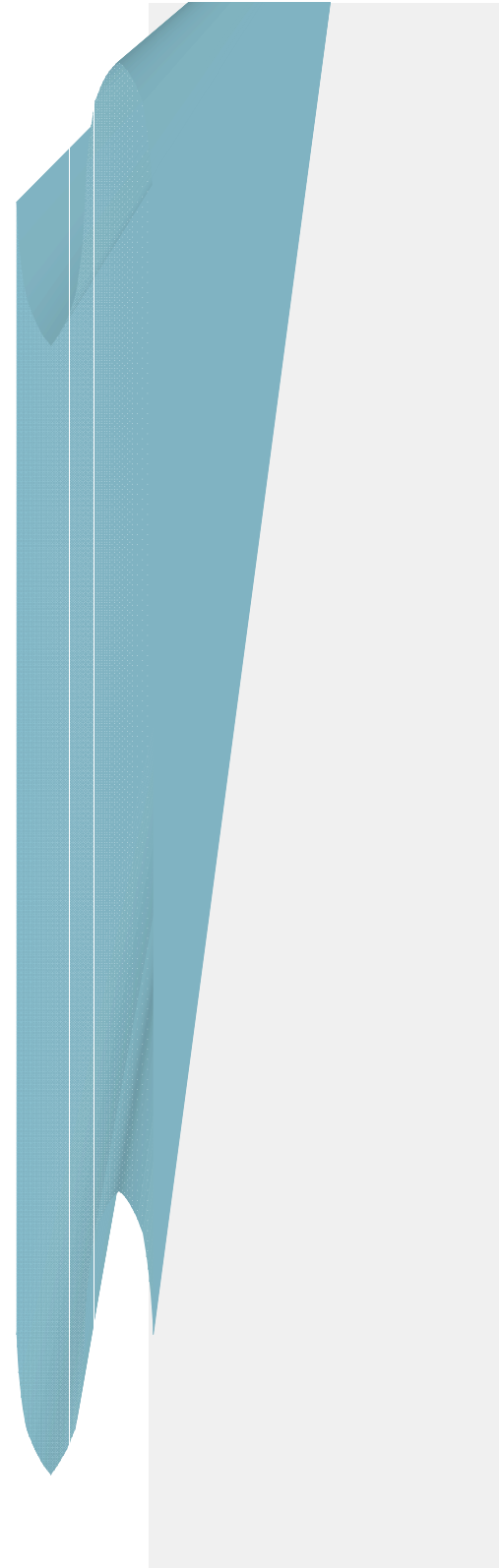


10 SCHEDULE OF SERVICES

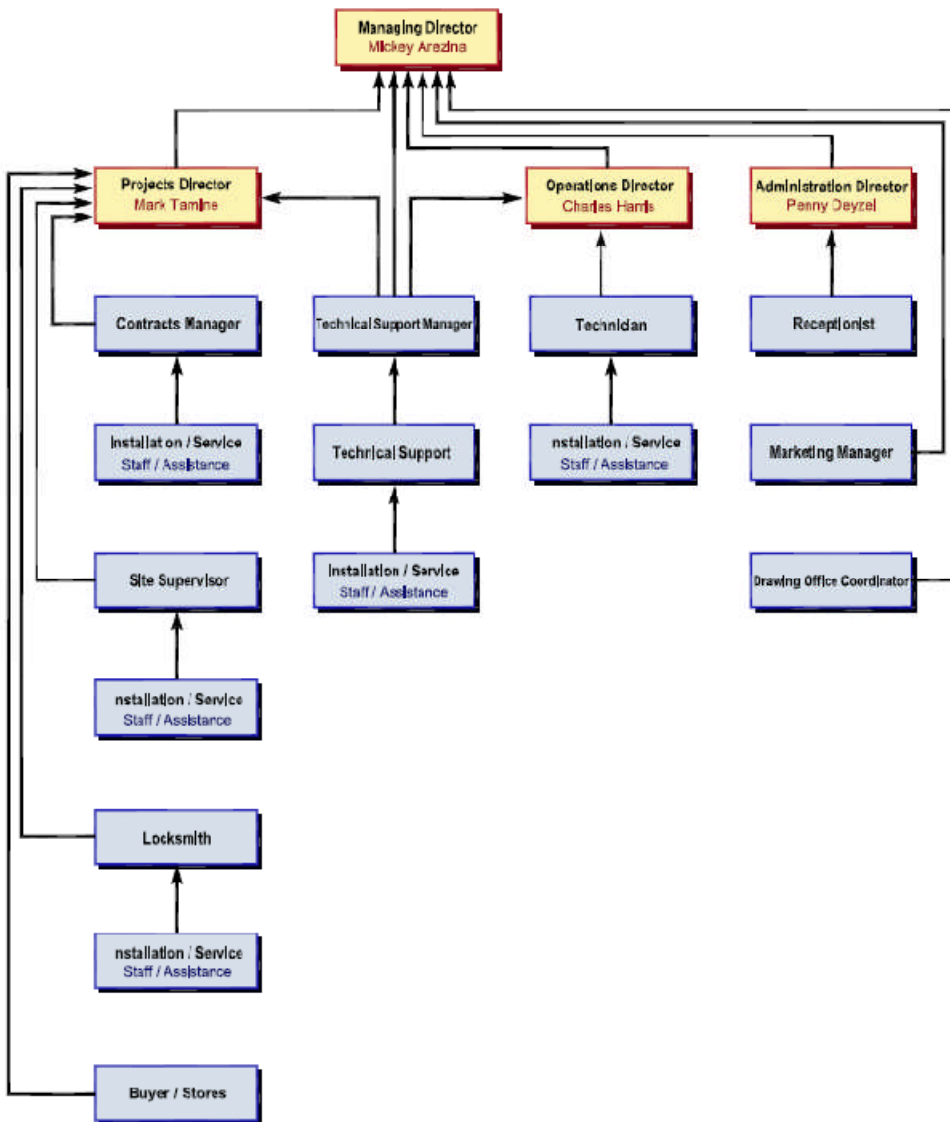
- Integrated Solutions
- Access Control
- Third Party Applications
- Logical Access
- Smart Card Solutions
- Biometric Solutions
- Time & Attendance
- Customized Reports
- CCTV
- IP Video Solutions
- Intelligent Video
- Fire Detection
- Inert Gas Fire Suppression
- Audio & PA Systems
- Intercoms
- Licence Plate Recognition
- RFID



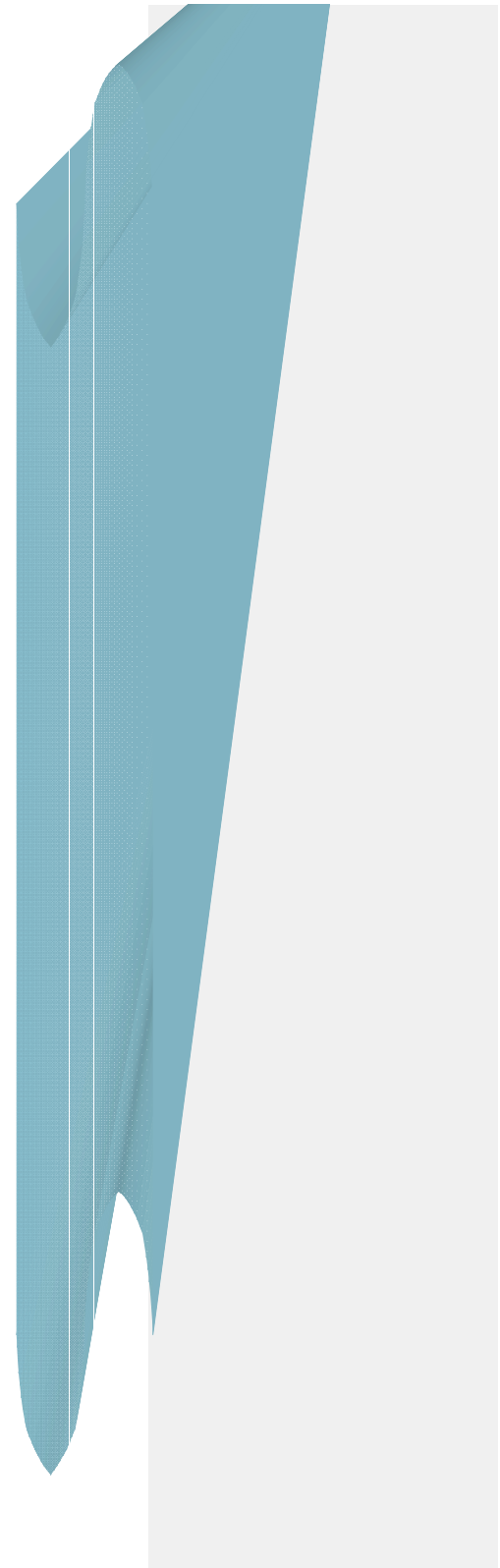
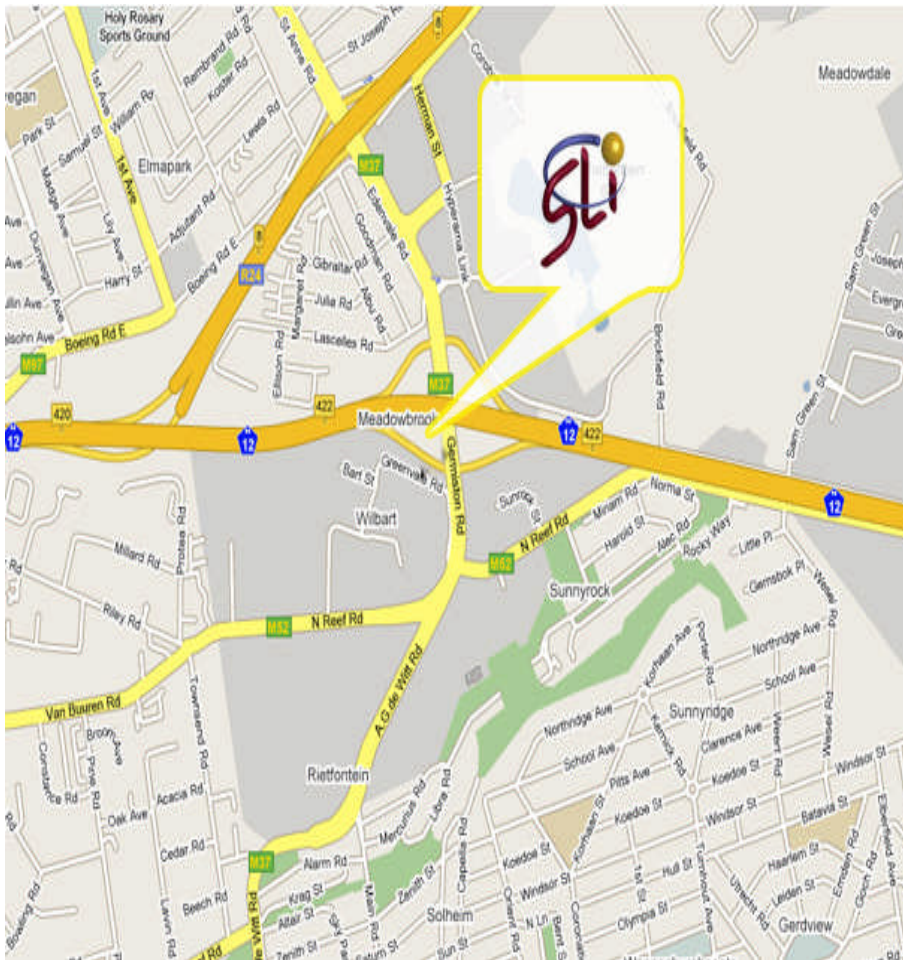
11. SAMPLE DRAWING



12. COMPANY ORGANOGRAM



13. COMPANY MAP



14. STANDARD TERMS AND CONDITIONS

VALIDITY:

All quotations are valid for a period of thirty days unless otherwise stated on the quotation, after which time we reserve the right to revise our quoted price.

DELIVERY:

Delivery and installation will be scheduled to a timetable to be mutually agreed.

GUARANTEE:

The installation and equipment supplied by this Company, when operated in accordance with our instructions, is guaranteed for a period of twelve months from the date upon which each item of the equipment is set in operation, or is ready to be set in operation, whichever occurs first. All equipment supplied by other manufacturers as part of this contract will carry the guarantee provided by the manufacturer of that equipment.

The foregoing guarantee is in substitution for any other guarantee expressed or implied and is limited to replacement or repair of defective installation work or materials, this does not include the replacement of extinguishant in the event of accidental system discharges due to any reason whatsoever.

Any electronic equipment can be damaged by induced voltage and therefore the necessary suppression equipment to prevent damage to voltage sensitive electronic equipment (i.e. Micro-processor based control panels) is the responsibility of the client and the Company cannot be held responsible for the replacement or repair of any damaged equipment in the event of induced voltage

CONSEQUENTIAL LOSS:

We accept no liability for consequential loss, or loss of profits arising from defective equipment or workmanship from any cause or causes at any time prior to, during, or after the installation of the equipment including that arising from latent defects only ascertainable during and after commissioning.

TERMS OF PAYMENT:

Monthly invoices will be submitted for material and labour supplied. Payment is due and payable thirty days from date of invoice. Retention is not applicable to any progress claim, all invoice values are nett. We reserve the right to charge interest at two percent above the prime bank rate on outstanding amounts.

PAYMENT GUARANTEE:

Smart Line Integration (Pty) Ltd reserve the right to request a payment guarantee from the employer or purchaser equal to the total value of the contract works, such guarantee to be provided on request at no additional cost to Smart Line Integration (Pty) Ltd.

CONTRACT PRICE ADJUSTMENT:

Unless otherwise stated on the quotation, escalation on this contract will be based on CPI, base date being the date of this quotation.

FOREIGN EXCHANGE FLUCTUATION:

Should this quotation include imported goods or materials, foreign exchange fluctuation will be calculated utilizing the exchange rate ruling at today's date. Any fluctuation will be to the client's account.

VALUE ADDED TAX:

Value Added Tax has been excluded from the quotation, however, a "Tax" Invoice will be submitted for payment, identifying Value Added Tax applicable at the time of sale. In the event of any other statutory surcharge being increased or imposed subsequent to submission of this quotation or during the execution of the contract, we reserve the right to recover these additional costs.

CONTRACT PERIOD:

The price quoted is on the assumption that all contract works can be carried out on a continuous basis during normal working hours. Should work be delayed and/or the contract prolonged or accelerated due to circumstances beyond the Company's control, which results in lack of continuity of site work or necessitating the Company having to leave site and re-establish, any additional costs including overtime costs involved due to lack of continuity of work or re-establishment or due to contract period change, shall be borne by the purchaser. Should any delay of the kind referred to above occur, the Company shall without delay, give notice to the purchaser or one of his foreman or representatives on the site.

CANCELLATION OF ORDER:

A cancellation fee of 12.5% of contract value will be applicable. Should design, preparation of drawings, procurement of equipment or deployment of labour have commenced, we reserve the right to recover these costs.

OWNERSHIP:

Notwithstanding delivery, all goods supplied by the seller, to the purchaser, shall remain the sole property of the seller until full payment thereof has been received by the seller.

DRAWINGS:

All accessory data submitted with the tender, such as drawings, illustrations, weights, dimensions, etc. are approximate only, unless otherwise stated. All drawing, cost estimates and other particulars remain the property and are the copyright of the Company and must not be made available to third parties. All drawings and other records pertaining to tenders shall immediately be returned, unless such tender has been accepted. All drawings issued are generated on CAD and our price is provided on the basis that equipment layouts, architectural and structural drawings required for the project will be provided on electronic media for integration on our system.

DESIGN:

The company accepts no responsibility for the efficacy of any design not prepared by the Company and in any case, our responsibility is limited to the quality and capacity of the equipment specified in this offer.

EXCLUSIONS:

The following services are excluded from this offer:

- (a) The provision of an ac supply to the control equipment.
- (b) The final interconnection from the control relays to the air conditioning fan control circuits.
- (c) Unless specifically agreed, the Company does not include any builders', painters', masons', bricksetters', carpenters', electricians', plasterers' work, nor trenching, backfilling and making good. Whilst reasonable care will be exercised in carrying out the works to avoid unnecessary damage to the buildings, structures and contents, the Company does not accept responsibility for cutting and making good holes or for making good damage to the buildings, structures or contents. Where the purchaser is providing scaffolding and hoisting facilities, these shall be made available for the Company's use.
- (d) Work being carried out outside normal working hours.
- (e) The procurement and installation of any Post Office telephone cabling between the protected premises and remote locations.
- (f) No contra charges for rectification, replacement or cleaning will be accepted unless agreed in writing prior to this work being carried out.